



# Signature Minerals

Beautiful. Natural. Affordable.

---

## 2009 Product Catalog

All natural *silky smooth* mineral makeup  
that's actually nice to your skin!



You're gonna love the way you look  
in [Signature Mineral Makeup!](#)

Catalog updated June 2009.

# Signature Minerals Index

\*\*\*\*\*

## Mineral Makeup ~

Foundation	-----3
Blush and Bronzer	-----4
Concealer and Corrector	-----5
Finishing Veils	-----6

## Eye Colors ~

- Mattes	-----
- Pearls	-----8
- Shimmers	-----9
- Metallics	-----9

Mascara and Eye Liner Pencils	-----10
-------------------------------	---------

## Lip Butters ~

-----11
---------

## Makeup Kits ~

Custom Makeup Kits – Full Size	-----12
Petite Kits and Gift Sets	-----13

## Brushes and Cases ~

Luscious Brush Collection	-----14. 15
Signature Brush Collection	-----16. 17
Brush Sets	-----18
Makeup Bags and Cases	-----19

## More ~

Face Primer	-----20
Kaolin Clay	-----20
Jars and Mini Scoops	-----20

## Skin Care ~

Signature Natural Line	-----21
<u>Goat Milk Soap</u>	-----22
Bath Accessories	-----22

## Samples ~

-----23
---------

## Company Information ~

-----24
---------

# Mineral Foundation

## 0 Porcelain



Neutral undertones.  
The very lightest of our foundation shades. For the fairest of the fair.

## 1.0 Ivory



Pink undertones.  
For light complexions with pink undertones.

## 2.0 Light



Yellow undertones with a hint of peach.  
For light creamy skin with or without yellow undertones.

## 2.3 Light Beige



Neutral beige.  
For light complexions with just about any undertone.

## 3.0 Light



Neutral pink undertones.  
For light complexions with neutral or pink undertones.

## 4.0 Light



Light yellow to olive undertones.  
For very light skin with yellow or olive undertones.

## 5.0 Medium Light



Deep pink undertones.  
For medium-light range who prefer very pink foundation.

## 5.3 Medium Beige



Neutral beige – True Beige.  
For medium-light to medium complexions.

## 6.0 Medium Light



Olive undertones.  
For med-light skin with olive or yellow undertones.

## 7.0 Medium Light



Neutral to yellow undertones.  
For med-light skin with neutral, slight yellow, or slight olive undertones.  
Works for many skin tones.

## 8.0 Medium



Pink undertones with a warm bronze base.  
For medium skin with a bronze tan or tanning bed tan.  
\*8.0 is darker & richer than 8.3

## 8.3 Med-Dark Beige



Neutral beige.  
For medium complexions.

## 9.0 Medium



Olive undertones with a slight hint of pink for balance.  
Rich shade for medium skin with olive or golden undertones or a golden summer tan.

## 10.0 Medium



Yellow undertones with a hint of peach.  
For medium complexions with creamy yellow skin.  
\*10.0 is much lighter than 9.0

## 11.0 Medium Deep



Deep yellow undertones.  
For medium to med-deep skin with Very Strong yellow undertones.

## 12.0 Medium Deep



Yellow undertones.  
For medium to med-deep skin with yellow or caramel skin tones.

## 13.0 Deep



Golden/deep pink undertones.  
Rich shade for deeply tan complexions with undertones of bronze, red and gold.

30g jar/10g net wt. \$14.95 || 20g jar/6g net wt. \$11.95 || 10g jar/3g net wt. \$9.95 || Samples also available.

# Mineral Blush & Bronzer

M= matte, SM= semi-matte, Sh= shimmer

## Adobe Sun - M



Warm shade of earthy clay. Subtle and natural blush for light to med-light skin.

## Buff Apricot - M



Warm peach with just a dash of pink. Very natural blush for light to medium skin.

## Caramel Kiss - SM



It is a beautiful caramel brown with just a kiss of shimmer.

## Cocoa Bean - SM



A beautiful rich brown with a soft sheen.

## Damask Pink - M



Pretty pink blush with hints of rose. Very natural on med-light to medium skin.

## Desert Rose - SM



Rich browns with rose undertones. Natural on medium to dark skin.

## Desiree Peach - M



A beautiful medium peach. Looks particularly nice on olive skin.

## Dusty Mauve - M



Rich neutral mauve blush. Looks natural on med-light to medium skin.

## Gleeful Mauve - M



A beautiful rich mauve with slight brownish undertones. Looks natural on medium to darker skin.

## Palest Pink - M



Soft pale pink blush for the fairest skin. All over **face color** for light to medium skin.

## Pink Jazz - SM-Sh



This luminous blush is a very pretty rosy pink with a slight shimmer. Natural on light to medium-dark skin.

## Plum Delight - SM-Sh



A delightful shade of plum with a delicate shimmer. Looks natural on med-light to darker skin.

## Rose - SM



Soft rose blush with a touch of gold hues. Compliments almost any skin tone.

## Roseberry - SM-Sh



Dusty rose blush with hints of raspberry. Natural on most skin tones in the light to medium range.

## Rosewood - SM-Sh



Natural earthy rose with a sheer luminous glow - beautiful shade! Not dark - Looks natural on almost any skin tone.

## Seashells - M



Delicate barely-there blush for the lightest skin tones. All over **face color** for med-light to medium skin tones.

## Terra Cotta - M



Warm peachy shade of earthen clay. A bit richer than Adobe Sun. Natural on all skin tones.

## Gran Mariner Bronzer



This very light *subtle* bronzer adds a little color to the lightest of complexions.

Matte finish.

## Goddess Bronzer



Natural touch of sun for medium-light to medium complexions.

Matte finish.

## Island Princess Bronzer



Luminous bronzer that gives you a *true island glow!*

*Warning-* a tiny bit of Island Princess goes a long way!

20g jar/6g net wt. \$10.00 || 10g jar/3g net wt. \$6.95 || Samples also available.

Bronzers also available in 30g jar/10g net wt. \$14.00

# Mineral Concealers and Color Correctors

## Light Touch Concealer



Conceals blemishes, hyper-pigmentation and many other skin imperfections.

For the very lightest skin.

## Bisque Concealer



Conceals blemishes, hyper-pigmentation and many other skin imperfections.

For light to med-light skin.

## Multi-Tasking Concealer



Conceals blemishes, hyper-pigmentation and many other skin imperfections.

For med-light to dark skin.

## Mint Color Corrector



Visibly corrects the appearance of rosacea, red marks, broken capillaries and all-over ruddiness.

For medium to dark skin.

## Soft Mint Color Corrector



Visibly corrects the appearance of rosacea, red marks, broken capillaries and all-over ruddiness.

For light to medium skin.

## Sunshine Color Corrector



Visibly corrects the appearance of *even the darkest* under-eye circles.

For medium to dark skin.

## Soft Sunshine Color Corrector



Visibly corrects the appearance of *even the darkest* under-eye circles.

For light to medium skin.

## Apricot Color Corrector



Corrects the appearance of blue veins and bruising.

## True Blue Color Corrector



Corrects orangey/peachy appearance. Perfect for those using sunless tanning lotion or tanning beds.

30g jar/10g net wt. \$14.00 || **20g jar/6g net wt. \$10.00** || 10g jar/3g net wt. \$6.95 || Samples also available.

## Mineral Finishing Veils

### Angel Wings Veil



This tinted veil provides a polished matte finish for those with yellow or neutral undertones.

Minimizes pores and fine lines. Reduces shine. Super oil control yet non-drying.

Also makes a great face primer when applied before your foundation.

### Petal Pink Veil



This tinted veil provides a polished matte finish for those with pink or neutral undertones. And for those who want to tone down redness or add life to a dull complexion.

Minimizes pores and fine lines. Reduces shine. Super oil control yet non-drying.

Also makes a great face primer when applied before your foundation.

### Tawny Tan Veil



This tinted veil provides a polished matte finish for those with caramel or darker skin tones.

Minimizes pores and fine lines. Reduces shine. Super oil control yet non-drying.

Also makes a great face primer when applied before your foundation.

### Translucent Veil



This completely transparent veil provides a polished semi-matte finish for any skin tone.

Minimizes pores and fine lines. Reduces shine.

### Soft Radiance Veil



This sheer veil provides a dewy youthful glow for any skin tone.

Minimizes pores and fine lines.

Luminous finish with the slightest shimmer.

Tap under and around your eyes for an instant eye lift!

30g jar/10g net wt. \$16.95 || **20g jar/6g net wt. \$12.00** || 10g jar/3g net wt. \$8.00 || Samples also available.

# Mineral Eye Colors

## Mattes

M= matte, SM= semi-matte

### Accent - SM



This soft eggshell is the perfect accent shadow! Makes a wonderful neutral highlighter.

### Beige - SM



*Luminous* yet barely-there nude that is beautiful on lids and perfect as a highlighter.

### Black Eye Liner - M



Use dry for subtle smoky line; wet for a more defined line.

### Charcoal - SM



A beautiful eyeliner and is perfect for creating that "smoky eye" look!

### Eggplant - M



With this deep smoky plum shadow, you can easily create both dramatic and natural looks.

### Eggplant Light - M



A pale plum to lavender, this shade makes a gorgeous shadow and *highlighter*.

### Laceleaf - SM



This shadow is named after the flowers that grow on certain varieties of the LaceLeaf Maple Tree.

### Midnight Blue - M



With this charcoal-like blue shade, you can easily create dramatic eyes; a fantastic *eyeliner*.

### Moss Dark - SM



This is a very silky dark moss eye shadow that looks fabulous on anyone who looks good in green!

### Moss Light - M



This earthy yet fairly light shade of green looks very natural on lids, particularly amazing on brown eyes.

### Rain Forest - SM



This silky smooth green is a standard that goes well with brown, green or yellow/gold eye shadow.

### Soft Brown - M



This delicate brown with the slight pink undertone is natural and earthy.

### Taupe - M



Beautiful shade of brown with light raisin undertones; makes a great *eyeliner*.

### Terra Cotta - M



Medium shade of earthy clay that looks natural; makes a pretty *lip color*.

### Terre Dark - M



Deep rich shade of brown that can be used to create natural or dramatic eyes.

### Terre Light - M



Very subtle earth tone that gives a barely-there nude look.

### Terre Medium - M



Nice light brown that looks very earthy and natural.

### Waves - SM



This light ocean blue with silver hues will make your baby blue eyes "pop"!

### White - M



This is a nice *highlighter* and can be used to tone down other eye colors.

### Wild Thyme - M



The color of Wild Thyme in bloom, this is a beautiful deep shade of lavender.

10g jar/3g net wt. \$8.00 || 5g jar/1.5g net wt. \$5.00 || Samples also available.

## Mineral Eye Colors Pearls

### Bordeaux



This rich rosy shade, blended from rubies and berries with a hint of plum, makes a *luscious lip color*.

### Butterfly



Beautiful shade of periwinkle with gentle hints of shimmery lilac.

### Champagne



This nude golden frost with hints of pink will bring life back to your eyes.

### Cocoa



This earthy medium brown with a dash of copper is a very natural shadow.

### Driftwood



This earthy med-brown with hints of gold gives your lids a bare yet glistening look.

### Fuchsia



This delicate blend of pink and lilac also makes a lovely *blush* and *lip color*.

### Golden Salmon



Natural peachy pink with a touch of golden hue; beautiful *blush* and *lip color*.

### Hibiscus



This delicate pink on pink will add just a bit of pink luster to your lids.

### Khaki



Earthy tan with hints of gold; very light and natural.

### Lavender



Beautiful lavender with the slightest hint of iridescence that lights up your eyes.

### Pink Pearl



Dusty pink with just the slightest hint of purple; makes a gorgeous *blush* and *lip color*.

### Purple Rain



Beautiful iridescent purple with shimmers of lavenders, crystals and pinks.

### Sand Beige



Luminous shade that brings life back to your eyes; makes a natural *blush* and *lip color*.

10g jar/3g net wt. \$8.00 || 5g jar/1.5g net wt. \$5.00 || Samples also available.

Visit our website to see our NEW  
Summer Pop Eye Color Collection!

## Mineral Eye Colors *Shimmers*

### Aurora



This shimmery, luminous eye shadow is deep blue with hints of purple in a deep charcoal base.

### Jo's Sandcastle



This light shade works well as a *highlighter* and is perfect as a natural all-over eye color.

### Lavender Ice



Very light lavender with just a touch of white gold shimmer. Pretty highlighter.

### Moon



Easily create dramatic eyes with this smoky blue with slight silver hue; great *eyeliner*.

### Moon Crest



A shimmery silver shade that gives the appearance of sunlight on the crest of a wave.

### Nikki's Emerald



This deep shimmery emerald green is just gorgeous – like jewels for your eyes!

### Plum Pizazz



This satiny plum-wine shadow is deep, rich and absolutely gorgeous.

### Sky Blue



The palest of blues, this is your barely there blue with a sheer silvery shimmer.

### Soft Pink



Delicate white pink frost with the slightest hint of lilac. Pretty *highlighter* and *lip color*.

### Sparkle



The name says it all! This is pure shimmery shine and sparkle.

### Spruce



A deep, rich blue-green shade with luminous silvery shimmer.

### Sun



This elegant eye color is a beautiful compliment to any of our brown or green eye colors.

## *Metallics*

### Bronze



Molten bronze with lots of gold/bronze flecks.

### Copper



Molten copper with lots of gold/copper flecks.

### Desert Sun



Ripe red raspberries mixed with almost golden flecks.

### Silver



Antique silver/gray with flecks of silvery sparkle. Easily create a look of sophistication.

### Turquoise



Deep bluish-green with flecks of turquoise and golden sparkles.

10g jar/3g net wt. \$8.00 || 5g jar/1.5g net wt. \$5.00 || Samples also available.

# Natural Mascara and Eye Liner Pencils

## Natural Mascara

Naturally formulated, botanically enriched mascara.

Defines your lashes all day without clumping, flaking or smudging!

Use 1 coat to define; 2 or 3 coats for more volume.

No parabens. No clay. No dye.



Black Magic

**\$9.95**



Espresso

**\$9.95**



Chocolate Truffle

**\$9.95**

\*\*\*\*\*

## Jojoba Eye Liner Pencils

Smooth jojoba-based formula glides on with ease and looks great all day!

No parabens. No clay. No dye.\*



Belgian Chocolate (brown)

**\$6.95**



Blue Jeans (deep navy blue)

**\$6.95**



Brown Sugar (very light brown)

**\$6.95**



Jet Set (black)

**\$6.95**



Smoking Gun (charcoal)

**\$6.95**

# Signature Natural Lip Butters

Made fresh weekly with lip quenching ingredients including organic oils, natural filtered bees wax and mango butter.  
No chemicals. No dyes.

**Lip Butter Tubes**  
come in original, herbal and flavors that keep your lips moisturized, nourished and naturally healthy.

Tubes are not pigmented.

Net wt. 0.15oz/4.25g

### Original Clear



Original clear formula with no added herbs or flavoring.

**\$2.95**

### Herbal



Infused with the healing melissa herb – great for problem lips and cold sores.

**\$6.95**

### Fun Flavors



Creamsicle, Very Berry and Bubble Gum - naturally flavored.

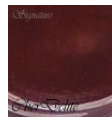
**\$3.95**

**Lip Butter Pots**  
come in a variety of beautiful shades requested by our customers.

Pigmented with natural minerals.

Singles Net wt. 0.2oz/5.7g  
Trios Net wt. 0.6oz/17g

### Cher Delite



Derived from our own *Plum Delight*, it is a beautiful shade of plum that is slightly pearlescent.

**\$3.95**

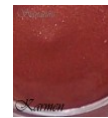
### Cindy



Derived from our own *Cocoa*, it is a lush, yet oh-so-natural lip color.

**\$3.95**

### Karmen



Derived from our own *Roseberry*, it is a beautiful lip color.

**\$3.95**

### Kay



Derived from our own *Damask*, this pretty nude shade looks great on almost everyone!

**\$3.95**

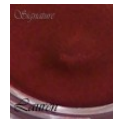
### Keri



Derived from our own *Copper*, this is a glamorous, shimmering shade.

**\$3.95**

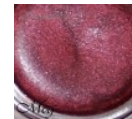
### Lauren



Derived from our own *Bordeaux*, it makes for lush and gorgeous lips!

**\$3.95**

### Meg



Derived from our own *Pink Jazz*, this is very pretty rosy pink lip color.

**\$3.95**

### Susanna



Derived from our own *Terra Cotta*, it is a natural shade of earthen clay.

**\$3.95**

### Autumn Trio



A beautiful trio made up of *Susanna*, *Cindy* and *Keri* Lip Butters.

**\$9.95**

### Wine & Roses Trio



A beautiful trio made up of *Lauren*, *Karmen* and *Kay* Lip Butters.

**\$9.95**

### Luscious Lip Brush



This classy, retractable brush is perfect for applying your Lip Butters!

## Full Size Custom Kits

### Basically Me



**Your choice of:**  
 2 Foundations  
 4 Blushes, Bronzers, Concealers,  
 and/or Finishing Veils  
 3 Eye Colors

**\$62.00**

### Pamper Me



**Your choice of:**  
 2 Foundations  
 5 Blushes, Bronzers, Concealers,  
 and/or Finishing Veils  
 4 Eye Colors

**\$72.00**

### Indulge Me



**Your choice of:**  
 2 Foundations  
 6 Blushes, Bronzers, Concealers,  
 and/or Finishing Veils  
 6 Eye Colors

**\$84.00**

### 5-Piece Starter Kit



**Your choice of:**  
 1 Foundation  
 4 Blushes, Bronzers, Concealers,  
 and/or Finishing Veils

**\$39.00**

### 6-Piece Starter Kit



**Your choice of:**  
 1 Foundation  
 4 Blushes, Bronzers, Concealers,  
 and/or Finishing Veils  
*Plus ANY Kabuki Brush*

**\$48.00**

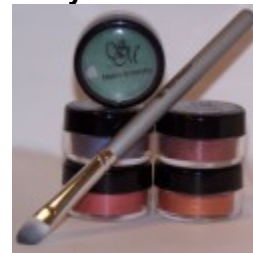
### Corrector Kit



**Your choice of:**  
 3 Color Correctors and/or Concealers  
*Plus any 1 Concealer Brush*

**\$28.00**

### Eye Color Kit



**Your choice of:**  
 5 Eye Colors  
*Plus any 1 Eye Brush*

**\$32.00**

## Petite Kits and Gift Sets

### Petites 10



Your choice of any 10 colors or shades in  
petite-size pots.

**\$35.00**

### Petites 20



Your choice of any 20 colors or shades in  
petite-size pots.

**\$55.00**

### Petite 4 Gift Set

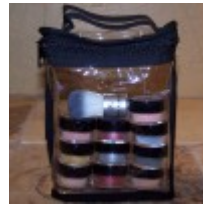


This classy Petite Gift Set includes:

- ❖ 4 Petites (your choice);
- ❖ 1 Luscious Baby Buki;
- ❖ 1 Glossy Gift Purse-Bag (choice of white or black);
- ❖ 1 Large Sheet of Colored Tissue Paper.

**\$24.00**

### Petite 10 Gift Set



This cute Petite Gift Set includes:

- ❖ 10 Petites (your choice);
- ❖ 1 Baby Buki (your choice);
- ❖ Zippered Vinyl Bag with Handle.

**\$45.00**

### Luscious Kabuki Duo Gift Set



This classy Petite Gift Set includes:

- ❖ 3 Lip Butters (your choice);
- ❖ 1 Luscious Retractable Lip Brush;
- ❖ 1 Glossy Gift Purse-Bag (choice of white or black);
- ❖ 1 Large Sheet of Colored Tissue Paper.

**\$20.00**



This cute Luscious Kabuki Duo Gift Set includes:

- ❖ 1 Luscious Kabuki Brush;
- ❖ 1 Luscious Baby Buki Brush;
- ❖ 1 Festive Organza Gift Bag.

**\$24.95**

\*\*\*\*\*  
**Glossy Gift Purse** – 4 ½" x 3 ½" x 2"

**\*Gift Purse Note\*** - Because of the nature of the glossy purse-like gift bag, we do NOT place the included items inside the bag - you will need to open the gift purse, place the items in it and tie your bow. It's really simple and makes a fabulous gift!

\*\*\*\*\*  
**Zippered Vinyl Bag** – 5 ½" x 4 ½" x 1 ¾"

**Petites** – 5g jar/1.5 net wt.

## Luscious Brush Collection

Truly the best of the best! Crafted from the finest, softest synthetic hairs you have ever encountered, these brushes apply minerals beautifully and feel like *pure silk* on your skin.



**Kabuki**  
L1

The incredibly soft, yet compact head applies minerals beautifully and evenly with full coverage. 2 7/8" tall x 1 1/4" handle diameter .  
**\$16.95**

**Baby Kabuki**  
L2

The same as your traditional size *Kabuki* - just smaller and cuter! Great for multiple applications. 2" tall x 3/4" handle diameter.  
**\$12.95**

**Handy Kabuki**  
L3

The long handle version of our *Kabuki*, though not quite as compact. Great for foundation and bronzer. 4 & 3/8" in length.  
**\$21.95**

\*\*\*\*\*

**Flat Top**  
L4

Designed for buffing on a heavier coverage of foundation or applying all over face Concealer. 4 & 1/4" in length.

**\$19.95**

**Blush**  
L5

Designed for perfect application of blush and bronzer. The lush dense brush head is identical to your *Baby Kabuki*. 5" in length.

**\$14.95**

**Angled Face**  
L6

Angled, slightly tapered head gently hugs the contours of your face. Perfect for blush and contouring. 5" in length.

**\$12.95**

\*\*\*\*\*

**Soft Finish**  
L7

The perfect fluffy head for dusting on your *Finishing Veils* and all-over face colors. 5" in length.

**\$12.95**

**Complete Cover**  
L8

Large tapered, fairly flat head for applying heavier foundation coverage and all over concealing. 6 & 3/4" in length.

**\$16.95**

**Concealer Brushes**  
L9 and L10

Flat tapered head for concealing. **Concealer** (L10) for small tight areas; **Large** (L9) for larger areas. (L10) 5 & 5/8"; (L9) 6 & 1/4".

(L9) **\$9.95** ; (L10) **\$8.00**

## more Luscious Brush Collection



*Crafted from the finest, softest synthetic!  
Perfect for the most sensitive skin.  
Zero potential for irritation.*

**Eye Shadow**  
L11

Ultra soft brush with a flat tapered head. Perfect for applying and blending eye shadows. 5 & 5/8" in length.

**\$6.95**

**Crease/Smudge**  
L12

Beautiful round head great for crease application and smudging for the smoky eye look. 5" in length.

**\$8.95**

**Angled Liner**  
L13

Beautiful round head great for crease application and blending! 5 & 5/8" in length.

**\$6.95**

\*\*\*\*\*

**Thin Liner**  
L14

Has a very thin head for applying a fine, thin precision line. 4 & 3/4" in length.

**\$6.95**

**Wet/Dry**  
L15

With a short, flat tapered head, this brush is perfect for wet application your Eye Colors. 5" in length.

**\$6.95**

**Retractable Lip**  
L16

This retractable brush has *such a classy* appearance and is a must to apply your Signature Lip Butters!

**\$8.95**

**Dispensing Brush**  
(photo right)

Fill with your choice of minerals – great for travel, perfect for touch ups! 6 & 1/2" in length. Holds apx. 4.5g of minerals.

Synthetic hairs are currently 2-toned brown in color.

**\$21.95**



## Signature Brush Collection



**Kabuki**  
**S1**

Crafted from ultra soft goat hair/Taklon blend, minerals really adhere to this blend; this full coverage kabuki has a compact, full and soft head. 2 ½" tall ; 1 ¼" handle diameter

**\$14.95**

**Baby Buki**  
**S2**

Like your traditional size *Kabuki* brush - just smaller and cuter! Soft and compact. Great for multiple applications. Crafted from soft goat hair / Taklon blend. 2" tall; x ¾" handle diameter.

**\$10.00**

**Hands On Buki**  
**S3**

Dense, effective head allows for controlled, precise application over the face and around eyes and nose. Crafted from soft goat hair/taklon blend. 6 & 1/4" in length.

**\$21.95**

\*\*\*\*\*

**Flawless Face**  
**S4**

Perfect for dusting on your Finishing Veils! Crafted from the softest *cruelty free* goat hair/taklon blend. 5 ½" in length.

**\$16.95**

**Angled Face**  
**S5**

The angled and slightly tapered head gently hugs the contours of your face. Great choice for Blush, and contouring. Crafted from ultra soft *cruelty free* goat hair/Taklon blend. 5" in length.

**\$12.95**

**Tapered Cheek**  
**S6**

Smaller semi-fluffy head great for applying Blush and Bronzer. Crafted from ultra soft *cruelty free* goat hair/Taklon blend. 5" in length.

**\$7.95**

\*\*\*\*\*

**Total Coverage Face**  
**S7**

Large fairly flat tapered head. Great for heavier foundation coverage and large area concealing. Crafted from ultra soft Taklon. 5" in length.

**\$12.95**

**Ultimate Concealer**  
**S8**

Applies Concealer beautifully – perfect size for concealing in the smallest areas of your face. Crafted from ultra soft Taklon. 5" in length.

**\$10.00**

## more Signature Brush Collection



**Eye Shadow**  
**S9**

Ultra soft with a slightly fluffy head that is perfect for applying all your mineral eye colors! Crafted from the softest *cruelty free* pony hair. 5" in length.

**\$5.95**

**Smudge**  
**S10**

Round head great for crease application and smudging for the smoky eye look. 5 ½" in length.

**\$8.95**

**Cover/Fill-in**  
**S11**

Has a flat, tapered, rounded head crafted from ultra soft Taklon. With precision application, this brush perfect for applying Eye Colors and any kind of fill in work. 5" in length.

**\$5.95**

\*\*\*\*\*

**Brown Definer**  
**S12**

A perfectly angled brush made for defining, enhancing and taming your eyebrows. Crafted from stiff *cruelty free* badger hair. 5" in length.

**\$5.97**

**Thin Liner**  
**S13**

Very fine head perfect for applying a fine, thin precision line. Crafted from ultra soft *cruelty free* Sable. 5" in length.

**\$5.98**

**Flat Liner**  
**S14**

Flat squared head perfect for applying eyeliner (wet or dry) for a very natural look. Crafted from semi-stiff Taklon. 5" in length.

**\$6.95**

\*\*\*\*\*

**Groom Tool**  
**S15**

A handy "must-have" tool with a lash comb on one side and a brow brush on the other. Crafted from Taklon. 5" in length.

**\$4.95**

**Flocked Sponge**  
**(not shown above)**



Use dry or damp (depending on the look you want) to apply a heavier coverage of your Foundation or Concealer. Machine Washable; comes with a re-usable case.

**\$4.97**

**Black Buki**  
**(not shown above)**



Our fullest kabuki - ultra compact head, tightly packed with hand-tied goat hair. Many love this Buki BUT if you have sensitive skin it may not be for you. 2 ½" tall x 1 ¼" handle diameter.

**\$11.95**

# Signature Minerals Brush Sets

High quality 7 piece brush sets – perfect for travel, yet so *nice* you can use them every day!

Each set contains 7 brushes:

Powder Brush (full head), Blush Brush (full head), Eyeshadow Brush, Crease Brush, Angled Liner / Brow Brush , Small Shadow / Lip Brush and a Spoolie.

Each thoughtfully designed case is very compact - making these sets perfect for carrying in your purse. Features brush pouches, protector flap and a zipper pouch to carry a few pots of your "can't live without" minerals!

**Choose from top-quality Sable and luscious Synthetic sets.**



**Sable Brush Set**  
7 top quality Sable brushes.



**\$24.95**

\*\*\*\*\*



**Synthetic Brush Set**  
7 top quality luscious Synthetic brushes.



**\$24.95**

Measurements:

Brushes range 4" to 4.5".  
Case closed is 5.5" X 4"  
Case open is 5.5" X 7.5"

# Signature Minerals Makeup Bags and Cases



## Buki Clutch

Keep your Kabuki safe and sound with this convenient Buki Clutch.

Faux leather finish.

Closed 3 " x 2" **\$8.00**

(Luscious Kabuki shown is NOT included.)



\*\*\*\*\*



## Micro-Fiber Makeup Bag

Whether for every day use or tossing in your travel bag, this is one classy makeup bag you're gonna love!

The convenient mesh pocket can hold several full size jars of minerals, petites, lip butters, mascara, and even your kabuki brush! The four brush slots can hold 4 to 6 brushes, depending on brush size.

The detachable zippered case can hold just about anything: makeup, brushes, even all your toiletries!

Microfiber fabric makes clean up a breeze!

(Items shown in the bag are NOT included.)



**\$19.95**

Closed 7 1/2" x 9 1/2"

Open 16 1/2" x 9"

Inner case 9 1/4" x 9" x 3 1/2"

more...

**Face Canvas Face Primer**



Our clear gel face primer preps your skin for silky smooth makeup application- helping your makeup stay fresh and color-true even longer!

This non-greasy, very gentle formula feels like *pure silk* on your skin!

Apply a pea size to your clean face before applying your minerals. You can use your face primer alone or apply after your moisturizer. For best results, let it set for 2 or 3 minutes.

**Contains NO Parabens!**

25 ml / .85 fluid oz.

**\$16.95**

**Kaolin Clay**



Kaolin is a pure, natural cosmetic clay known for it's ability to absorb oil without causing dryness and it's ability to aid in healing acne.

Although it can be found in a few of your Signature Minerals products including finishing veils and concealers – we offer it in pure form due to request.

Kaolin can be used in a variety of ways. Here are a few tips given by our customers: apply as a base under your foundation, mix a small amount in your foundation or concealer, apply to clean skin (entire face or specific areas) at night.

Keep in mind kaolin is a white clay --- if using in or with your minerals, use very sparingly to avoid any unwanted color variations.

**10g/3g net wt. - \$4.00**  
**20g/6g net wt. - \$6.00**  
**30g/10g net wt.- \$8.00**

\*\*\*\*\*

**Jars and Scoops**

Perfect for creating custom blends of foundation, blush and eye colors. The smaller jars are also good for carrying small amounts of minerals in your purse or travel bag.

**Empty Jars**



**10g - \$1.00**  
**20g - \$1.55**  
**30g - \$2.00**

**Mini Scoops**



**Set of 4 scoops/ \$1.00**

Jars come with lids and sifters with seals.



# Signature Natural™

Skin Care designed to promote truly healthy skin!



- ◆ Cleansers
- ◆ Toners
- ◆ Moisturizers
- ◆ Mask and Scrub
- ◆ Bath & Shower Gels

Aloe Vera based and loaded with rich botanicals, you are going to love the way these natural skin care products nourish and pamper your skin!

Made from the finest natural and organic ingredients, Signature Natural Skin Care helps your skin to be exactly what it should be ~ healthy, radiant and beautiful!

- **Paraben Free**
- **Sulfate Free**
- **Phthalate Free**
- **Petroleum Free**
  - No Mineral Oil
  - No Paraffins

- **No Propylene Glycol**
- **No Cocamide** (Betaine or DEA)
- **No Cetearth 20** (PEG-20)
- **No Artificial Color**
- **No Artificial Fragrance**

For complete details, please see our Signature Natural Skin Care catalog.

## Goat Milk Soap



Farm fresh and hand-made with love ~ Our natural Goat Milk Soap gently cleanses while providing your skin with much needed nourishment and moisture.

Made from fresh goat milk, this soap is wonderful for all skin types and highly recommended for people with dry skin, eczema, psoriasis, acne, and sensitive skin.

Choose from Unscented and a variety of scents including Almond Honey, Cranberry, Crisp Apple, Ginger, Lily, Oats 'n Honey, Pearberry, Pina Colada, Rose, Spring Shower, and lots more!

To ensure quality and freshness, these soaps are hand-made in small batches. Please check availability before ordering.

No powdered milk. No chemicals. No artificial coloring.

**\$4.35 per bar.**

## Natural Bath Accessories

**Juniper Wood Soap Dish**  
**\$4.25**



From your face to your feet and everything in between - keeping your bare skin fresh, clean and polished just became easier and a lot more fun!

Our bath accessories are made from all-natural materials such as loofah, sisal (natural fibers from the agave plant), and pumice stone.

**Sisal Soap Pouch**  
**\$3.95**



**Loofah Face Buff**  
**\$2.95**



**Sisal Washcloth**  
**\$4.25**



**Natural Pumice Stone**  
**\$3.95**



We also carry Mesh Bath Puffs (\$1.95)– perfect for your Signature Natural Bath & Shower Gel!

**Looking for your shades?  
Try our Free Sampler!**



Your choice of any 6 Signature colors  
free + the cost of shipping!  
**Limit 1 per order.**

**Free Sampler Pack** is for anyone trying Signature Minerals for the first time **AND** for our current customers to sample different shades anytime. You can choose up to 6 shades in the Free Sampler Pack. There is **NO** catch, but **Limits Do Apply** ---

1) **One Free Sample Pack PER ORDER.** If you want to order 2, 5 or 8 Free Sampler Packs, fine with us ---But, you must place each order *separately*. If you put more than one Free Sample Pack in your cart on the same order, we will **ONLY** send you the first Free Sample Pack on the invoice.

2) **Lifetime Limit of 1 Free sample PER SHADE/COLOR.** If you want to sample the *exact same* product *more than once*, Samples Unlimited is for you.

3) **Free EYE COLOR Samples will NOT be sent in jars.** If you want eye color samples in jars, Samples Unlimited is for you.

All FREE Samples (except eye colors) come in 5g sifter jars with approximately 1g of minerals – enough for several applications. FREE Eye Color samples come in small zip bags with approximately 0.5 g of minerals.

#### **Free Sampler SHIPPING**

If you order **ONLY** a Free Sampler Pack (no other items in your cart), you will be charged our regular flat rate shipping.

If you order free samples along with other items, the free samples will **NOT** increase the cost of your order in any way. There is **NO** ADDED shipping for Free Samples - they really are FREE.

**NO Obligations. NO Worries. NO CATCH!**

**Want to Re-Sample?  
Not a problem!**



**Unlimited Samples  
2.50 each**

**Samples Unlimited** is for those who want to sample the same shade *more than once*, get more than 6 samples *in the same order*, or have their eye color samples in jars.

There is absolutely **NO LIMIT** - order as many or as few as you want for 2.50 each.

All Samples Unlimited (including eye colors) come in a 5g jar with approximately 1g of product – enough for several applications.

Signature Minerals  
**Company Information**

[www.signatureminerals.com](http://www.signatureminerals.com)

**Mailing Address:**

**Signature Minerals**  
5184 Caldwell Mill Rd., Suite 204  
PMB 250  
Hoover, AL 35244

**Phone:**

866-851-9610 (toll free)  
Mon-Fri 9am-4pm  
Central Standard Time

**Email:**

[productinfo@signatureminerals.com](mailto:productinfo@signatureminerals.com)

We accept: Visa, Master Card, Discover, American Express, PayPal  
Personal Checks (US only) and Money Orders (US only).  
Orders paid by check or paypal eCheck will not be processed until cleared.

**Order securely online 24/7.**

Your payment information is completely encrypted --  
we don't keep it, in fact, we never see it!

**Order by phone**

9am-4pm, Mon-Fri Central Standard Time.  
PLEASE have credit card ready before calling.

**Order by postal mail**

**US** checks and **US** money orders **ONLY**  
order will be processed **AFTER** payment is received/cleared.

NO COD.

We ship to almost every country in the world.